

This quick guide explains basic function settings and how to shoot and playback images. You can take this guide with you for shooting. For detailed instructions, refer to the EOS 7D Instruction Manual.



English Edition
© CANON INC. 2009

Quick Start Guide

1 **Insert the battery.**

2 **Attach the lens.**
When attaching an EF-S lens, align it with the white index on the camera. For other lenses, align it with the red index.

3 **Set the lens focus mode switch to <AF>.**

4 **Open the cover and insert a CF card.**

5 **Set the power switch to <ON>.**

6 **Set the Mode Dial to <□> (Full Auto).**
All the necessary camera settings will be set automatically.

7 **Focus the subject.**
Aim the viewfinder center over the subject and press the shutter button halfway to autofocus.

8 **Take the picture.**
Press the shutter button completely to take the picture.

9 **View the image.**
The captured image will be displayed for about 2 sec. on the LCD monitor.

The ☆ on the right of the function indicates that the function is available only when the Mode Dial is set to **P, Tv, Av, M, or B**.

- **Battery Life**

Temperature	No Flash	50% Flash Use
At 23°C / 73°F	Approx. 1000 shots	Approx. 800 shots

Image Playback

Index **Magnify** **Playback** **Erase** **INFO. Shooting information** **Select image**

Preparation

Menu Operations

<MENU> button **LCD monitor** **<SET> button** **<Main Dial>** **<Quick Control Dial>**

1. Press the <MENU> button to display the menu.
2. Turn the <Main Dial> to select the tab, then turn the <Quick Control Dial> to select the desired item.
3. Press <SET> to display the setting.
4. After setting the item, press <SET>.

Fully-Automatic Modes (□/CA)

Quality **Red-eye On/Off** **Beep**

Quality	⬆L
Red-eye On/Off	Off
Beep	On

P/Tv/Av/M/B Modes

Quality **Red-eye On/Off** **Beep** **Release shutter without card** **Review time**

Quality	⬆L
Red-eye On/Off	Off
Beep	On
Release shutter without card	On
Review time	2 sec.

Menu items **Menu settings**

Image-recording Quality

- Select [Quality].
- Turn the <Main Dial> or <Quick Control Dial> to select the quality and press <SET>.

Image-recording quality

Quality **RAW** **JPEG** **Possible shots**

RAW: Turn the <Main Dial> to select the quality.
JPEG: Turn the <Quick Control Dial> to select the quality.

Picture Style ☆

- Press the <Picture Style> button.
- Turn the <Main Dial> or <Quick Control Dial> to select the Picture Style.

Style	Description
Standard	Vivid colors and sharp images.
Portrait	Nice skin tones and slightly sharp images.
Landscape	Vivid blue skies and greenery and very sharp images.
Monochrome	Black-and-white images.

● For <Neutral> and <Faithful>, see the camera's instruction manual.

Quick Control Screen

- Press the <Q> button.
- The Quick Control screen will appear.

Aperture **ISO speed** **Shutter speed** **Exposure compensation/AEB setting** **Shooting mode** **AF area selection mode** **Image-recording quality** **Picture Style** **Flash exposure comp.** **White balance** **Highlight tone priority** **Flash exposure compensation** **Metering mode** **Auto Lighting Optimizer** **Custom Controls** **Drive mode**

- Tilt the <Quick Control Dial> to select the function, then turn the <Main Dial> or <Quick Control Dial> to set it.
- In the □ (Full Auto) mode, you can select certain drive modes and the image-recording quality.

Electronic Level

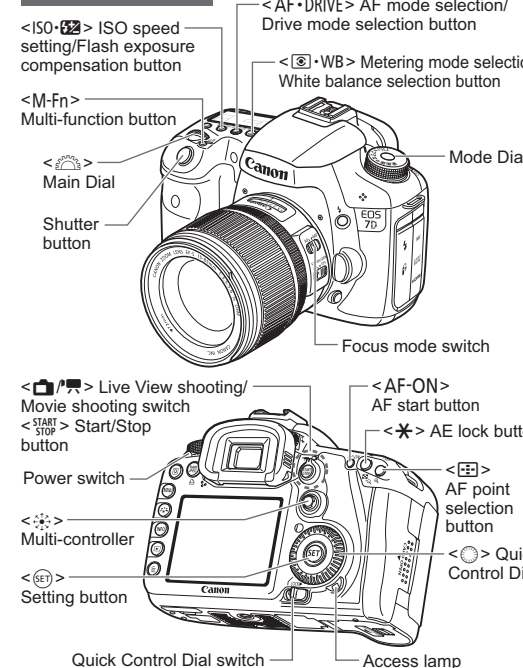
- Each time you press the <INFO.> button, the screen display will change.
- Display the electronic level.

Custom Functions

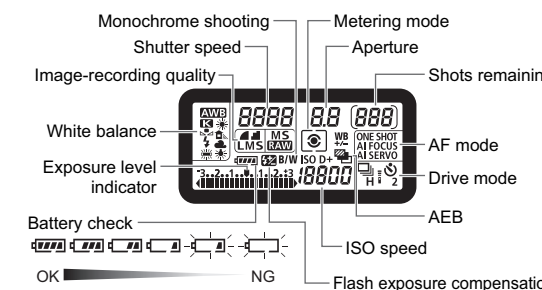
C.Fn I: Exposure	
1	Exposure level increments
2	ISO speed setting increments
3	ISO expansion
4	Bracketing auto cancel
5	Bracketing sequence
6	Safety shift
7	Flash sync. speed in Av mode
C.Fn II: Image	
1	Long exposure noise reduction
2	High ISO speed noise reduction
3	Highlight tone priority
C.Fn III: Autofocus/Drive	
1	AI Servo tracking sensitivity
2	AI Servo 1st/2nd image priority
3	AI Servo AF tracking method
C.Fn IV: Operation/Others	
4	Lens drive when AF impossible
5	AF Microadjustment
6	Select AF area selection mode
7	Manual AF point selection pattern
8	VF display illumination
9	Display all AF points
10	Focus display in AI SERVO/MF
11	AF-assist beam firing
12	Orientation linked AF point
13	Mirror lockup

Shooting Operation

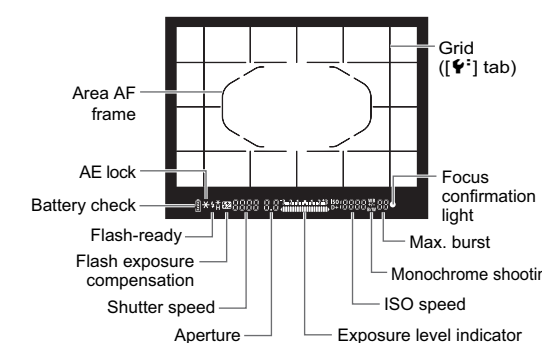
Nomenclature



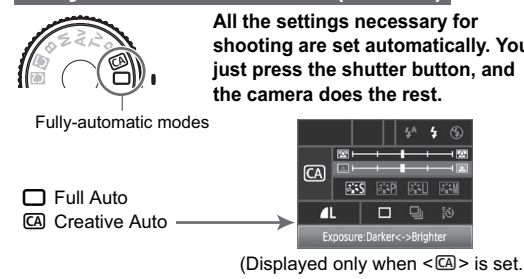
LCD Panel



Viewfinder Information

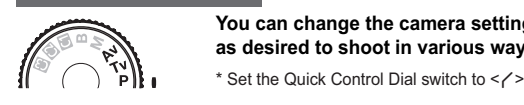


Fully-Automatic Modes (□/CA)



- Press the <Q> button, then tilt <AF-ON> to select the function.
- Turn the <Main Dial> or <Quick Control Dial> to set the function.

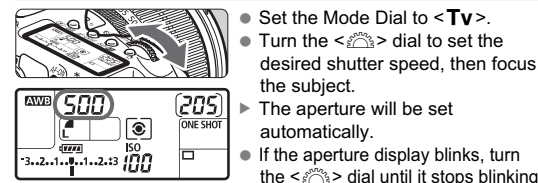
P/Tv/Av Modes



- You can change the camera settings as desired to shoot in various ways.
- * Set the Quick Control Dial switch to <P>.

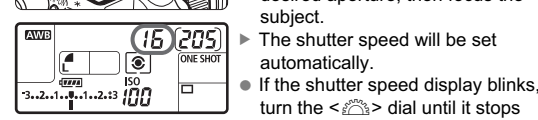
- Set the Mode Dial to <P>.
- As with the <□> mode, when focus is achieved, the shutter speed and aperture will be automatically set.

Tv: Shutter-priority AE



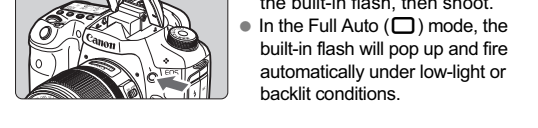
- Set the Mode Dial to <Tv>.
- Turn the <Main Dial> to set the desired shutter speed, then focus the subject.
- ▶ The aperture will be set automatically.
- If the aperture display blinks, turn the <Main Dial> until it stops blinking.

Av: Aperture-priority AE



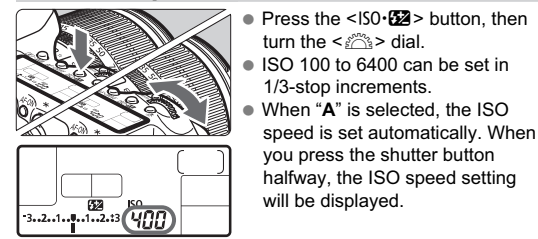
- Set the Mode Dial to <Av>.
- Turn the <Main Dial> to set the desired aperture, then focus the subject.
- ▶ The shutter speed will be set automatically.
- If the shutter speed display blinks, turn the <Main Dial> until it stops blinking.

Using the Built-in Flash



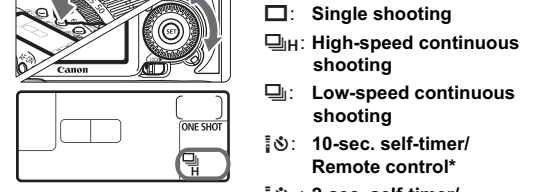
- Press the <Flash> button to pop up the built-in flash, then shoot.
- In the Full Auto (□) mode, the built-in flash will pop up and fire automatically under low-light or backlit conditions.

ISO: ISO Speed



- Press the <ISO> button, then turn the <Main Dial>.
- ISO 100 to 6400 can be set in 1/3-stop increments.
- When "A" is selected, the ISO speed is set automatically. When you press the shutter button halfway, the ISO speed setting will be displayed.

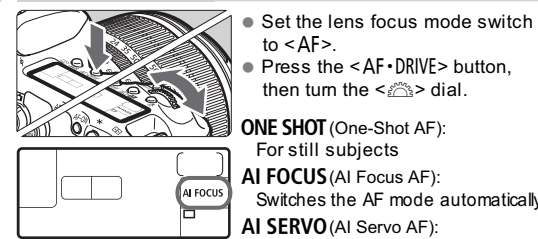
Drive Mode



- Press the <AF-DRIVE> button, then turn the <Main Dial>.
- : Single shooting
- H: High-speed continuous shooting
- L: Low-speed continuous shooting
- ⌚: 10-sec. self-timer/Remote control*
- ⌚2: 2-sec. self-timer/Remote control

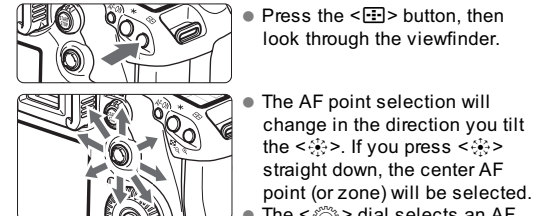
* This drive mode <⌚2> can be set in all shooting modes.

AF: AF Mode



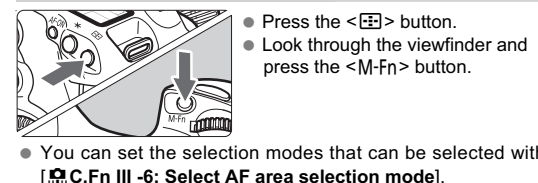
- Set the lens focus mode switch to <AF>.
- Press the <AF-DRIVE> button, then turn the <Main Dial>.

AF Point Manual Selection



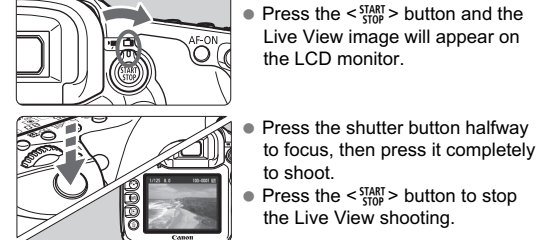
- ONE SHOT (One-Shot AF): For still subjects
- AI FOCUS (AI Focus AF): Switches the AF mode automatically
- AI SERVO (AI Servo AF): For moving subjects
- Press the <AF-POINT> button, then look through the viewfinder.
- The AF point selection will change in the direction you tilt the <AF-POINT>. If you press <AF-POINT> straight down, the center AF point (or zone) will be selected.
- The <Main Dial> dial selects an AF point in the horizontal direction, and the <Quick Control Dial> dial selects an AF point in the vertical direction.

AF Area Selection Mode



- Press the <AF-AREA> button.
- Look through the viewfinder and press the <M-Fn> button.

Live View Shooting



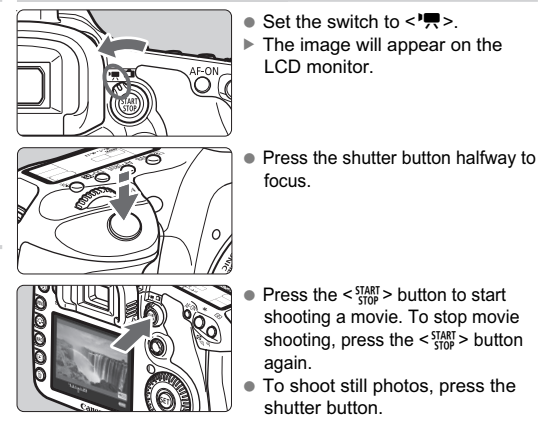
- You can set the selection modes that can be selected with [C.Fn III -6: Select AF area selection mode].
- Set the switch to <Live View>.
- Press the <START/STOP> button and the Live View image will appear on the LCD monitor.
- Press the shutter button halfway to focus, then press it completely to shoot.
- Press the <START/STOP> button to stop the Live View shooting.

● You can set Live View shooting settings with the menu options under the [C.Fn] tab.

● **Battery Life with Live View Shooting**

Temperature	No Flash	50% Flash Use
At 23°C / 73°F	Approx. 230 shots	Approx. 220 shots

Shooting Movies



- Set the switch to <Movie>.
- ▶ The image will appear on the LCD monitor.
- Press the shutter button halfway to focus.
- Press the <START/STOP> button to start shooting a movie. To stop movie shooting, press the <START/STOP> button again.
- To shoot still photos, press the shutter button.

- When the shooting mode is <M>, you can shoot movies with manual exposure.
- You can set movie shooting settings with the menu options under the [C.Fn] tab.